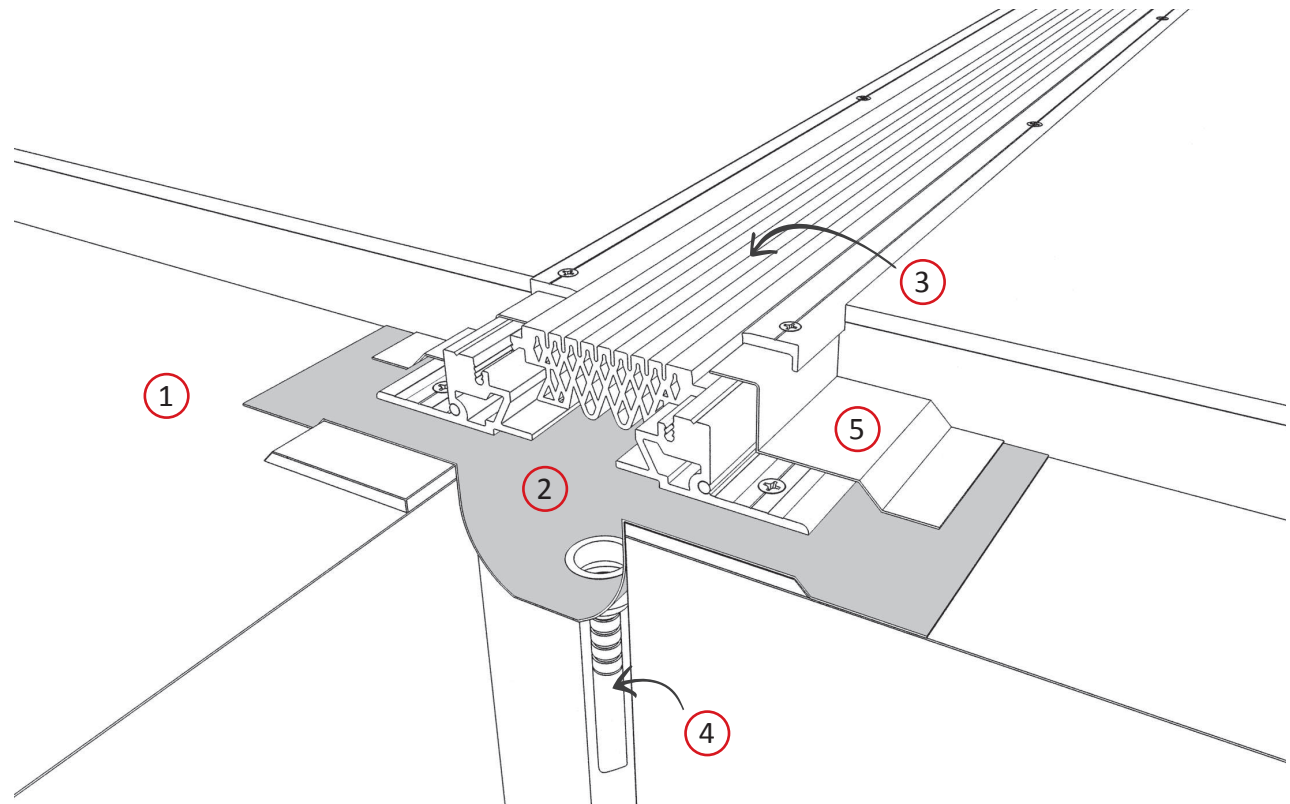


AquAtec

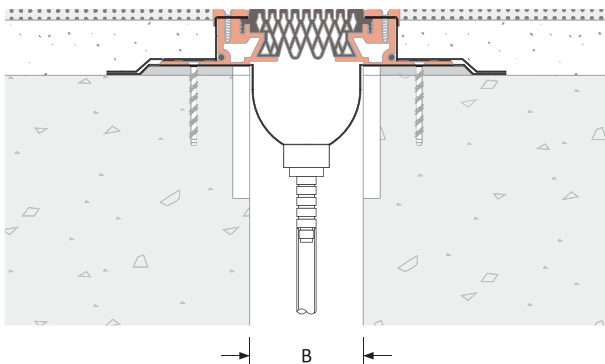
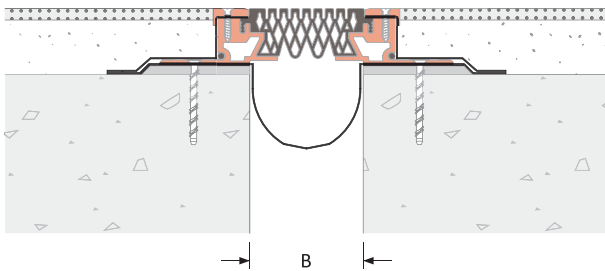
waterproofing membrane system that encapsulates expansion joints in floors, walls and roofs

Typical Components

- (1) Concrete slab
- (2) Waterproof membrane epoxy bonded to the substrate either side of the expansion gap
- (3) Expansion joint fitted directly over water barrier and centred over the expansion gap
- (4) Downpipe connected to waterproof membrane
- (5) Waterproof membrane bonded to the sides of the expansion joint and cross-linked to the membrane bonded to the substrate forming a completely watertight envelope



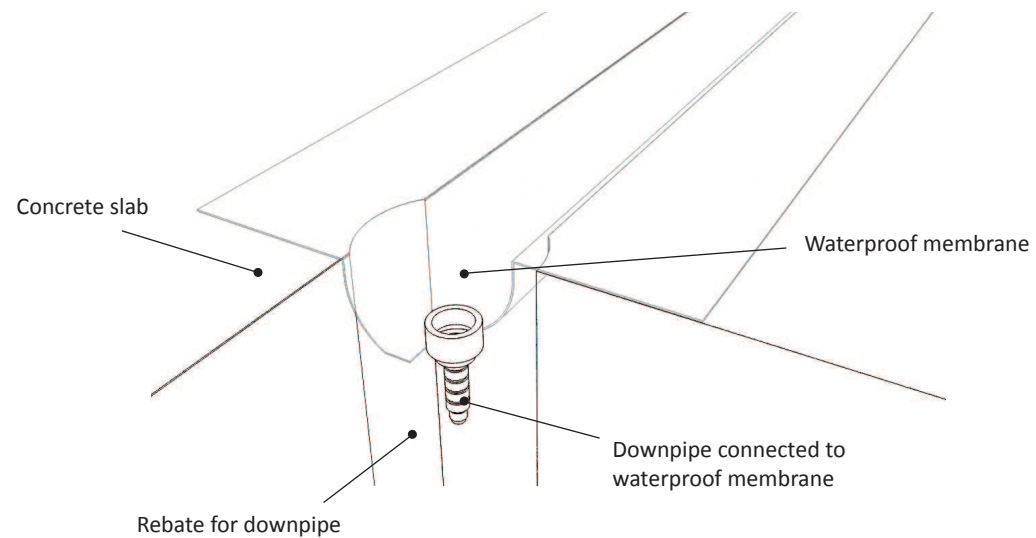
AquAtec 1500 : A01-A02



Expansion Joint Selection Criteria

Product Details

Joint Location	Gap Width B(mm)	Movement Capacity (mm)		Watertightness	Dielectric rating	Product Dimensions			Product Number	
		±	[Total]			Thick- (mm)	Material (mm)	Sight- A (mm)		Block- C (mm)
Floor - Floor	25 - 500	50% Gap	100% Gap	EN1928(B)	2Kv	1.14	325	-	-	1500-A01-325
Floor - Wall							500			1500-A01-500
Wall - Wall							750			1500-A01-750
Corner Wall							1000			1500-A01-1000



Features

Movement

Easy to install
High movement capacity +/- 250mm

Material

1.14mm thick EPDM waterproofing membrane bonded to the substrate and cross-linked to membranes bonded to the side and foot plates of the joint encapsulating the expansion joint

External and Internal Locations

Floor to Floor
Floor to Wall
Wall to Wall
Corner Wall
Roof to Roof
Roof to Wall
Parapet Walls

Traffic Frequency per day

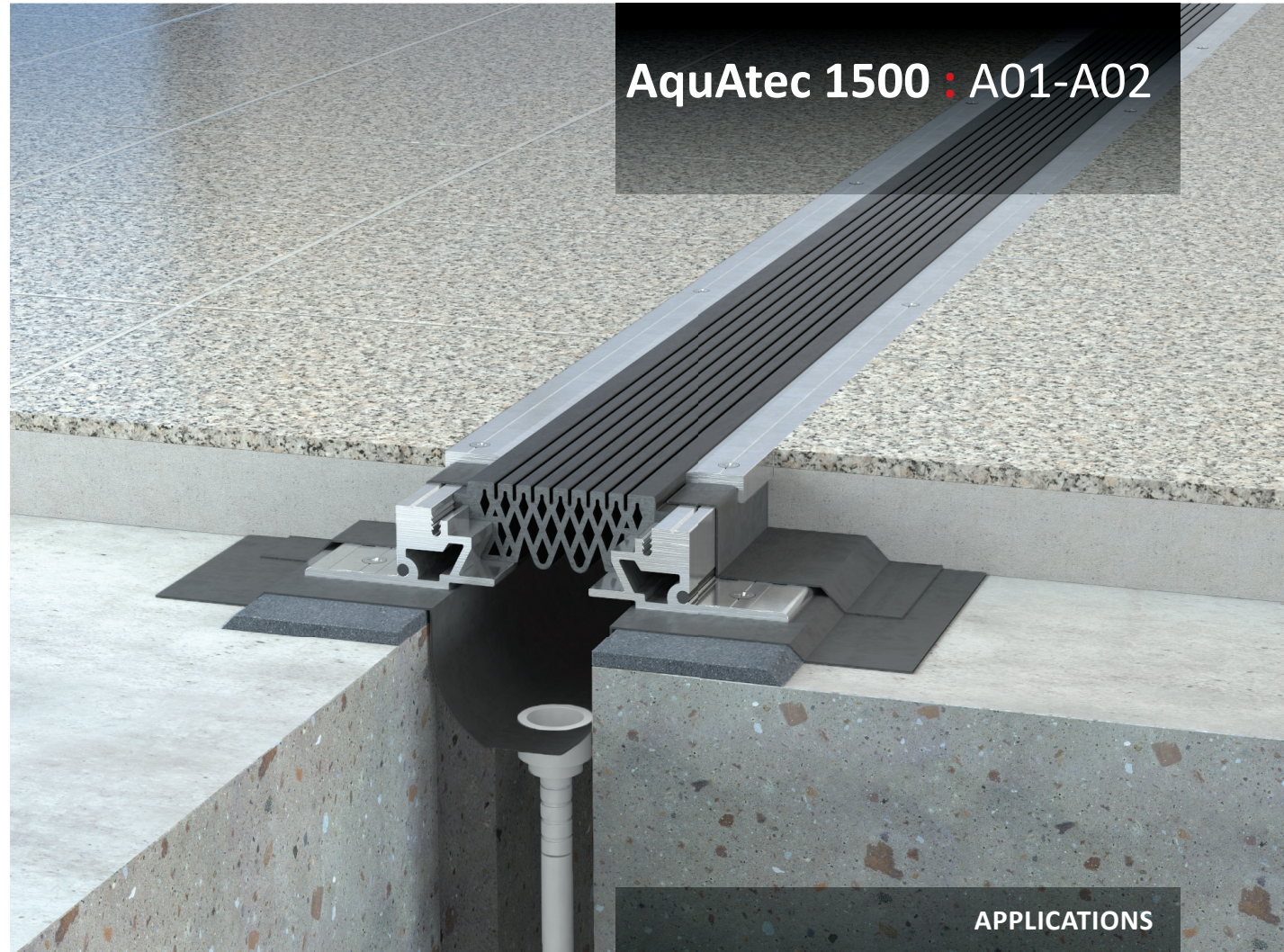


- - - - -

System Options

Gap width(s)	25-500 mm
Material width(s)	325, 500, 750, 1000mm
Material thickness	1.14mm
Colour(s)	Black
Drainage	Down pipe option
Pre-assembly in factory	Contact Vexcolt

AquAtec 1500 : A01-A02



APPLICATIONS

Airport Terminals | Educational | Exhibition Centres
Department Stores | Distribution & Retail Warehouses
Factories | Hospitals | Museums | Offices & Hotels
Parking | Places of Worship | Residential Buildings
Rail, Metros & Elevated Rail Stations | Roads & Bridges
Shopping Centres | Sports Stadiums | Supermarkets